



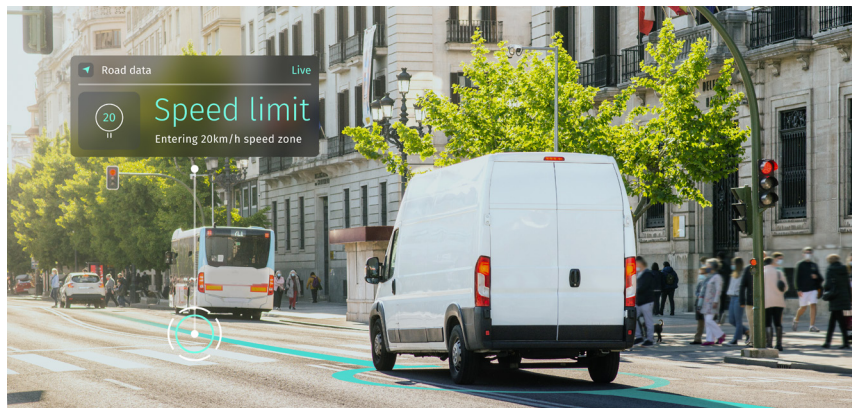
HERE Signs, Signals and Warnings

Boost driver safety and awareness with timely alerts.

HERE Signs, Signals and Warnings provides detailed information on upcoming road regulations and conditions that require a driver's attention. This service includes alerts for traffic signals, road signs, weather and time-related events, and, for the U.S., accident hotspots.

Distracted driving is a danger to everyone on the road. HERE Signs, Signals and Warnings mitigates this risk by helping drivers focus with timely alerts that last only as long as they need to without becoming irritating and distracting themselves.

HERE enriches its data with reliable sources and pairs it with vehicle sensor data, to produce reliable driver warnings.



Global Coverage

HERE has the broadest coverage in the industry spanning 5.6 million kms of roadways in 80+ countries, including all main functional class roads in key markets across the globe.



Rich offering

HERE also has the most comprehensive alert data with 40 different types of alerts and sensor data from more than 11 million vehicles.



Seamless Navigation

By fully integrating with other relevant HERE products such as HERE Speed Limits, end users can get multiple sources of information on one map.

Automotive use cases

→ ETA calculation:

Delivers the most accurate ETA calculation for every route, taking into account the number of traffic lights, road signs and conditional events that impact driving time.

→ Driver awareness and safety:

Provides alerts to help drivers focus at critical points in their journey to make safe driving easy.

Product features

HERE Signs, Signals, and Warnings provides the following information:

Driver alerts

Alerts drivers about upcoming situations that require immediate attention, such as:

- Accident hazards
- Animal crossings
- Congestion hazards
- Crossings with priority from the right
- Falling rocks
- Lane merges
- Pedestrian crossings
- Narrow roads
- School zones
- Sharp curves
- Tramway crossings
- Yield areas
- Railway crossings

Road signs

Delivers alerts only under specific conditions, such as:

- Icy road alert only if it's below 3 degrees Celsius
- Slippery road alert only if the windshield wipers are on
- Animal crossing alert only at night with headlights on
- School zone alert only during daytime hours
- Signs with validity time only at specified times

Traffic signals

Indicates the presence of traffic lights in a given area:

- Each one coded into the map as a condition on the link

Stop signs

Indicates the presence of stop signs in a given area:

- Each one modeled as a node on a link representing the location

Accident hotspots:

Identifies areas where there are three or more accidents.

Available in US only.



Data format

Available in SVG



Coverage

Available in 90+ countries

155,879 decision points globally, including junctions, merges and bifurcations.

About HERE

HERE, a location data and technology platform, moves people, businesses and cities forward by harnessing the power of location. By leveraging our open platform, we empower our customers to achieve better outcomes – from helping a city manage its infrastructure or a business optimize its assets to guiding drivers to their destination safely. To learn more about HERE, including our new generation of cloud-based location platform services, visit <http://360.here.com> and www.here.com.